

OPTEC PLUS



STEREO OPTICAL

THE NEW GENERATION ALL-IN-ONE DIGITAL VISION SCREENER



OPTEC PLUS

SMART VISION SCREENER

OPTEC PLUS PG

SMART VISION SCREENER WITH GLARE

Optec[®]PLUS

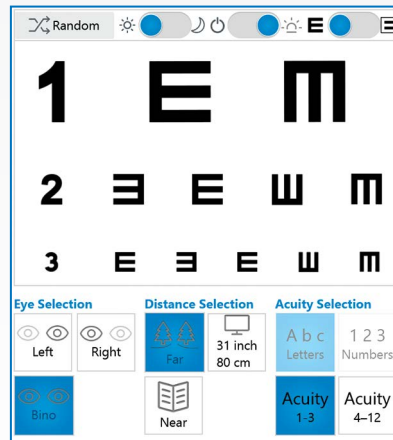
Stereo Optical **Optec[®]PLUS** all in-one digital vision screener enables quick, thorough and repeatable results in the pre-test room, saving valuable time in the exam lane.

New features include a user friendly interface, an expanded library of tests with limitless customization including auto-mode, randomization and protocols.

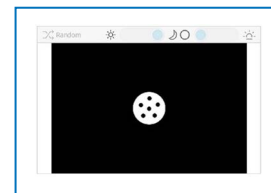
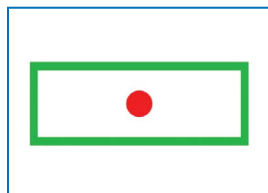
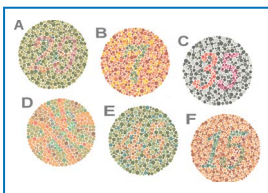
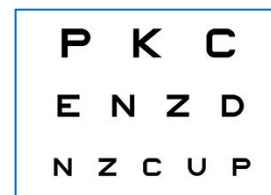
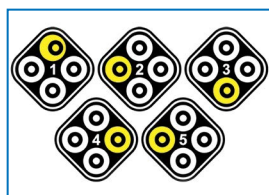
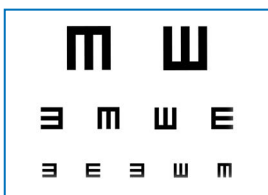
- Testing distances: Near, Far and Intermediate
- Monocular and Binocular
- Lighting conditions: day/night (optional)
- Reverse background
- No training or certification
- Constant and homogeneous luminance levels
- Lightweight and portable
- PC or Tablet

EASY TO USE AND INTUITIVE INTERFACE

- Control your test on a single screen
- Choose your test conditions in 1 click:
 - Night & Day
 - Monocular L&R, Binocular
 - Far, Intermediate, Near distance selection
 - Random
- Change your selection at anytime
- OPTEC PLUS PG enables running tests under the glare condition



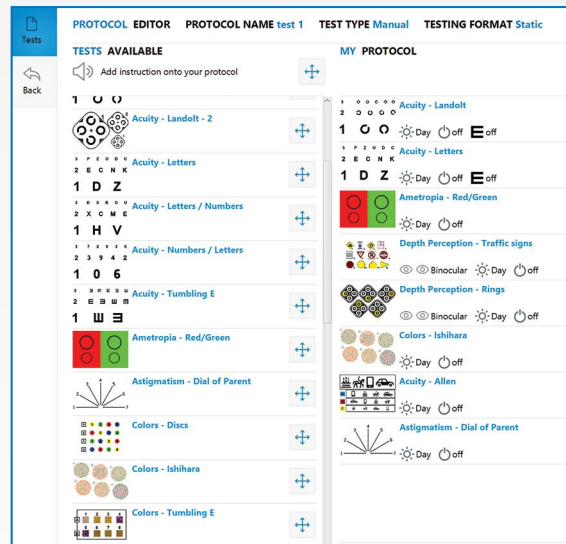
THE OPTEC PLUS TEST LIBRARY IS DESIGNED TO FIT ALL YOUR NEEDS



- Preliminary tests:** Loss of accommodation, Visual acuity: letters / numbers / Landolts / Snellen / E-Tumbling / ETDRS
- Refractive tests:** Ametropia Red/Green, Astigmatism, Latent hyperopia, Fusion, lateral and vertical phoria, Depth Perception
- Non refractive tests:** Color tests / Contrast sensitivity test
- Additional tests:** HOTV tests, Road sign recognition, Allen tests
- Horizontal peripheral vision test:** Stimuli at 60°, 70°, 80°, 85°, 90°, 100° and 55° temporal, 45° nasal
- Glare recovery test:** Seconds after which subjects can see the dots post exposure to glare (OPTEC PLUS PG)

CUSTOMIZATION: CREATE YOUR OWN PROTOCOL IS SIMPLE

- Design and record your own protocol:
 - Optometry screening
 - Occupational medicine
 - Driver rehabilitation
 - Sports/Athletics
 - F.A.A.
 - Public Health, Primary Care
 - Schools, Pediatrics
- Modify your preset protocols during screening
- All tests can be randomized



AUTOMATIC MODE*: INCREASE THE EFFICIENCY OF YOUR PATIENT FLOW AND SAVE TIME IN THE EXAM LANE



- With this unique feature, the tests can be :
 - Self administered by the patient or
 - Delegated to your staff
- Text to speech technology guides patient through the test, freeing you from repetitive tasks
- Preset auto-mode protocols
- The OPTEC PLUS records the patient results for you

CONNECTIVITY: GET ALL THE ADVANTAGES OF A SMART DEVICE

- Digital records in pdf file that can be printed, extracted and exported
- EMR compatibility to ease your data transfer
- Operated and monitored on:
 - PC - Laptop
 - Tablet
- Wireless connectivity: Bluetooth and WiFi

* Patent pending



Optec[®]PLUS

“My profession requires a new generation of visual screening devices”



Optec[®]PLUS WITH YOUR OWN PC



Optec[®]PLUS WITH TABLET



Optec[®]PLUS WITH LAPTOP

SPECIFICATIONS

Dimensions:	19" x 11.15" x 17.95"
Weight:	14.7 Lbs
Input:	100-240V , 50 – 60 Hz
Output:	24 DC, 2.1 A (50W)
Compliant to:	CE, FDA, FCC and ISO 16284 standards
Classification:	Class 1 Medical device without measurement function
Option available:	Headphone, ancillary lenses, peripheral mask

PC requirements:

- Processor Dual core 1,8GHz minimum
- Microsoft windows XP Sp3 minimum, 7 or vista pro or familial, 8 & 8.1 (x86 or x64) 10, 8 RT not compliant
- Ram 2Gb DDR2 minimum
- Screen 1280x768
- 2Go hard disk for the software
- 1 port USB 2.0 High speed or Native Bluetooth

As improvements are made, these specifications and pictures are not contractually binding and may be changed without prior notice.



Stereo Optical Company, Inc.
8600 W. Catalpa Avenue, Suite 703
Chicago, IL 60656 – USA
Phone: 1.773.867.0380
Toll-Free: 1.800.344.9500
Email: sales@stereooptical.com
www.StereoOptical.com

Your Contact