

CR-2 PLUS AF

DIGITAL NON-MYDRIATIC RETINAL CAMERA

AutoFunctionality
Plus Fundus
AutoFluorescence



CR-2 PLUS AF

SEE PRECISELY WHAT YOU'VE BEEN MISSING

INTEGRATED TECHNOLOGY

The Canon CR-2 PLUS AF Digital Retinal Camera is designed to help you consistently capture and analyze truly superb images—quickly, efficiently, and automatically. Designed around the legendary Canon EOS optics and advanced CMOS image capture technology, the CR-2 PLUS AF Digital Retinal Camera provides a remarkable set of advanced features specifically designed to enhance, capture, and analyze all fundus images.

DEDICATED DIGITAL CAMERA

Canon is the only brand offering a digital fundus camera that incorporates its own premium front lens, internal camera lenses, and CMOS camera sensor. The result is less chromatic distortion and spherical aberration. This, in turn, allows the camera to provide excellent color reproduction and

extraordinary image detail. Reds, greens, and blues all remain just as Canon intended. And, because the optical pathway is entirely manufactured by Canon and free of aberration, the CR-2 PLUS AF's digital filter set is able to provide very precise and consistent views of the various layers of the retina.

ULTRA-HIGH-RESOLUTION FUNDUS IMAGE

The CR-2 PLUS AF Digital Retinal Camera delivers stunning, high-resolution images—among the highest resolution available in any digital retinal camera today—with extraordinary speed, detail, contrast, and color fidelity.

EASY-TO-MANAGE
CONTROLS RIGHT AT
YOUR FINGERTIPS



HELP MAKE YOUR PRACTICE MORE EFFICIENT

The Canon CR-2 PLUS AF Digital Retinal Camera is extremely flexible and comes with a comprehensive set of standard features designed to help you quickly capture and analyze data. Some of the camera's more notable features include:

AUTOFLUORESCENCE (FAF)

At the touch of a button, the CR-2 PLUS AF provides instant access to this valuable diagnostic tool, enabling you to document changes in the Retinal Pigment Epithelium (RPE).

AUTO-FOCUS WITH MANUAL ALIGNMENT OVERRIDE

Automatically focus the eye by partially depressing the joystick, or easily switch to manual focus with a twist of the focus ring.

AUTO-CAPTURE

Automatically captures the image once the eye is properly focused.

AUTO-EXPOSURE

Automatically measures the volume of infrared light at the retina and adjusts the flash intensity.

AUTO-FUNDUS

Automatically switches from the external eye to retinal observation mode when the eye is properly aligned.

IMAGE ERROR DETECTION

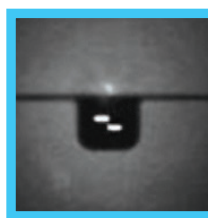
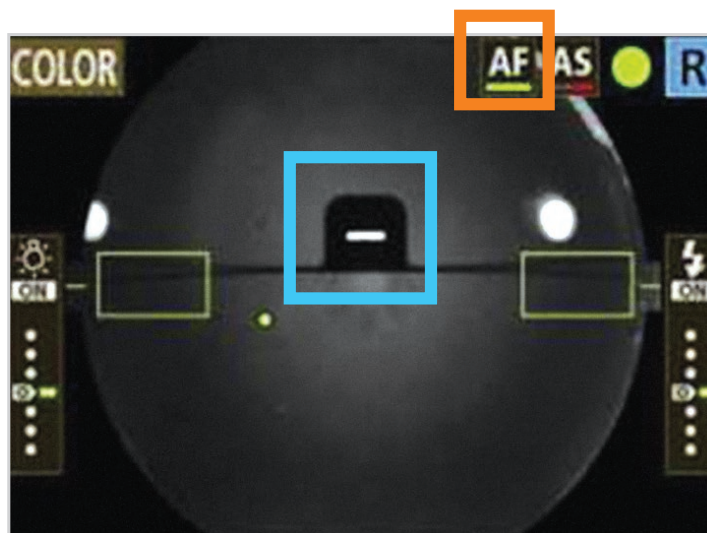
Advanced software automatically confirms both correct alignment and focus.

QUICK PREVIEW

Preview image directly on the dedicated EOS camera immediately after the image is captured.

LOW FLASH INTENSITY

Low flash increases patient comfort and reduces miosis for a faster exam. The CR-2 PLUS AF supports a wide range of low ISO speeds, including ISO 200/400/800/1600/3200/6400.



Not Focused



Focusing



Auto Focus Error

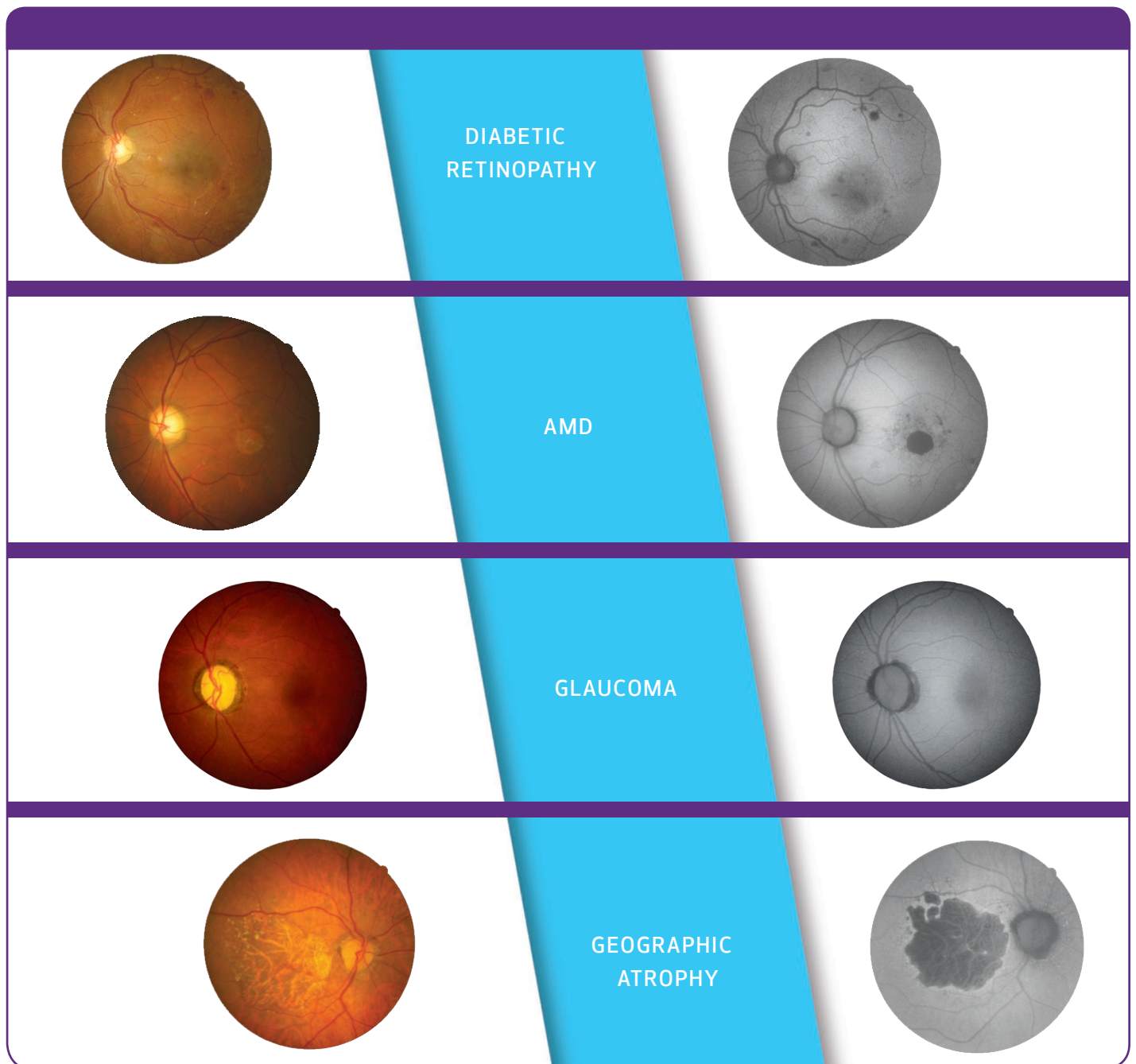


Correct Focus

SEE LIPOFUSCIN BUILD-UP AT AN EARLY STAGE

In the non-mydratric FAF mode, the CR-2 PLUS AF Digital Retinal Camera enables you to assess and monitor the condition of the Retinal Pigment Epithelium (RPE). The camera's infrared alignment light allows patients with pupils as small as 3.3 mm to be easily photographed without dilation drops. FAF is especially

effective in identifying and monitoring subtle changes in the areas of lipofusion, even before there's structural change or vision is affected. These changes may be pre-cursors to vision problems, such as diabetic retinopathy, age-related macular degeneration, glaucoma, and geographic atrophy, among others.



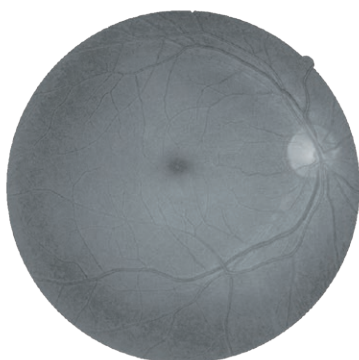
COUNT ON EXTENSIVE DIGITAL FILTER PROCESSING CAPABILITIES

The CR-2 PLUS AF Digital Retinal Camera produces ultra-high-resolution, wide-angle views with excellent color, detail, and contrast. To further enhance your retinal exam

capabilities, the camera has a full set of blue, green, and red digital processing modes to extract more in-depth information from each image.

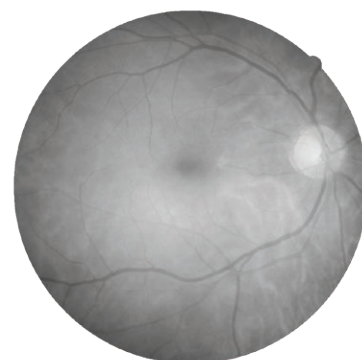
CHANNEL MODES

BLUE



Excellent views of the retinal nerve fiber layer, internal limiting membrane, retina folds, cysts, and epiretinal membranes.

RED



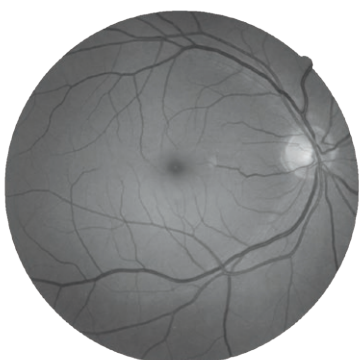
Useful for pigmentary disturbances, choroidal ruptures, choroidal nevi, and choroidal melanomas.

COLOR



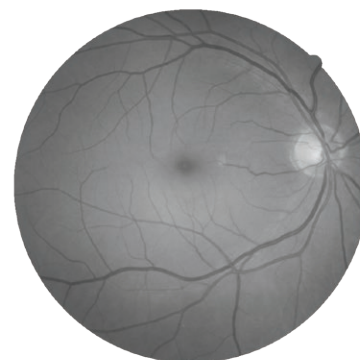
Brilliant, full-spectrum images with superior detail and color accuracy.

GREEN



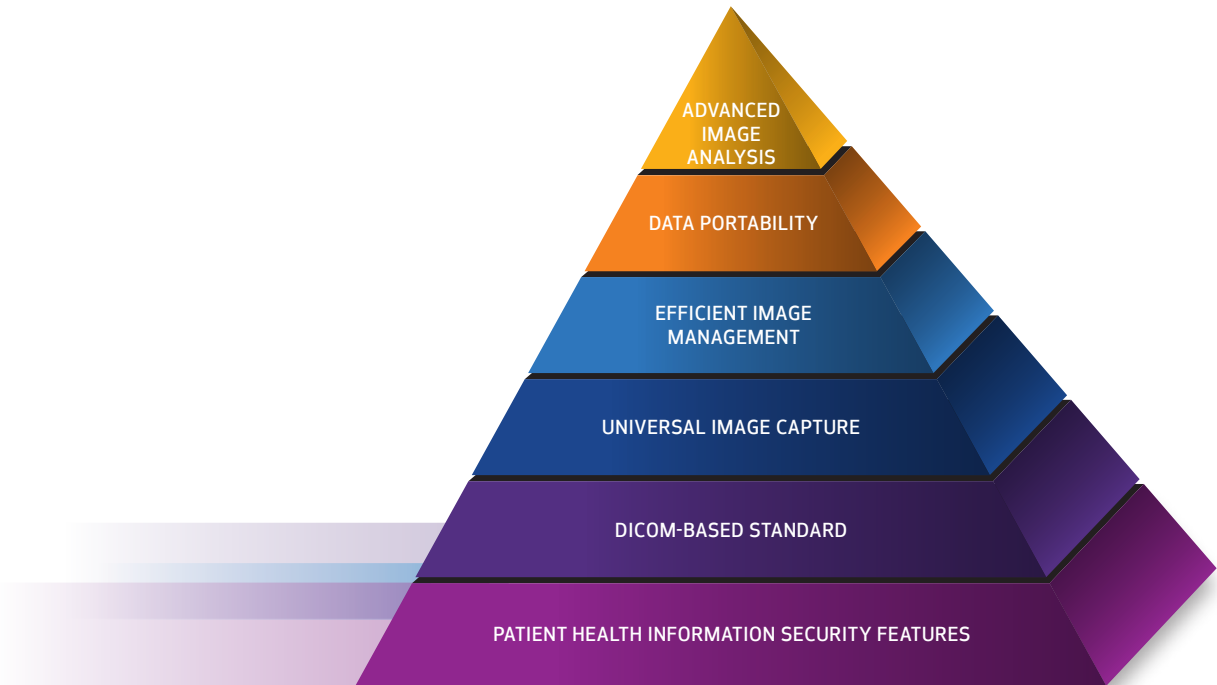
Enhances the view of the retinal vasculature and highlights common findings such as hemorrhages, drusen, and exudates.

RED-FREE



Used for evaluating the Retinal Nerve Fiber Layer (RNFL) and the vascular structure of the retina as it relates to glaucoma, diabetic retinopathy, and hypertension.

imageSPECTRUM IMAGE MANAGEMENT SOFTWARE



ADVANCED IMAGE ANALYSIS

Use Advanced Tools to help quantify progression; overlay and merge images to clearly see and assess changes; add notes to help document and annotate.

DATA PORTABILITY

Provides for the secure transmission of patient data to referring physicians and other coordinated care partners.

EFFICIENT IMAGE MANAGEMENT

This is not an EMR. It's software specifically designed to enhance practice workflow and productivity through the efficient viewing, query, analysis, storage, and sharing of completed images and studies, whether in the next room or across the country.▲

UNIVERSAL IMAGE CAPTURE

Bluetooth wireless encryption allows images and reports from third-party legacy instruments to be easily integrated for secure, single-patient record access.▲

DICOM-BASED STANDARD

Universal standard easily integrates with your diagnostic imaging and measurement devices from Canon and most other eye equipment manufacturers.▲

PATIENT HEALTH INFORMATION SECURITY FEATURES

Uniquely equipped with advanced security features, such as Aging Password, Role-based Access, 256K Encryption, Audit Log Recordkeeping, Patient Reconciliation, Auto Log-off, Automatic Archival Solution, and more.

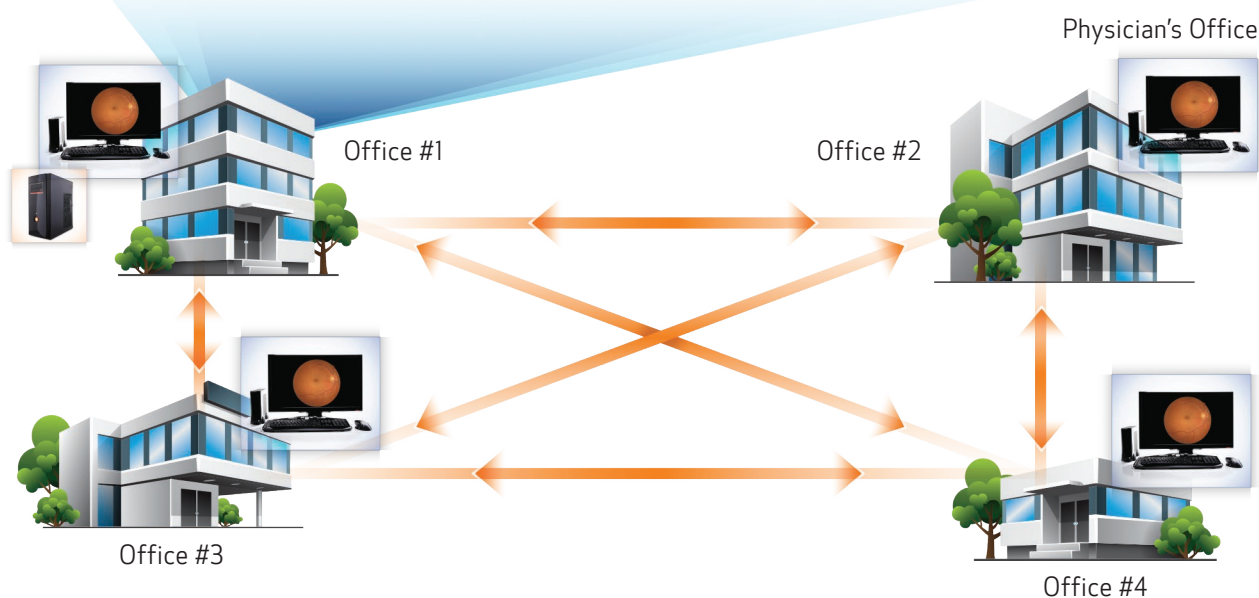
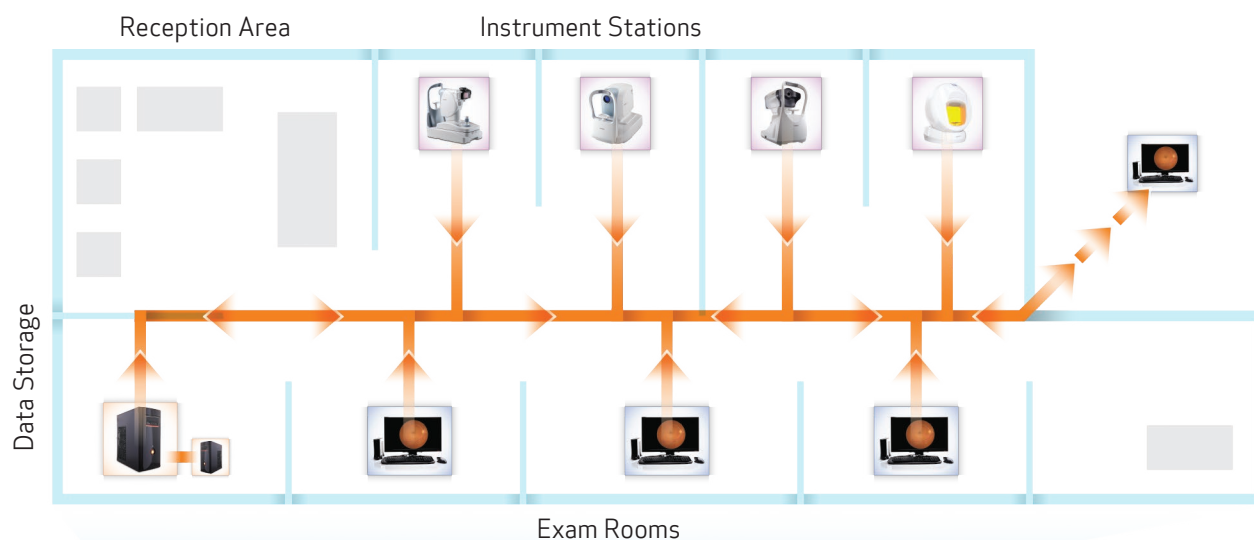
BEYOND THE EMR:
HOW TO BUILD
SECURE PEACE
OF MIND

▲ Instruments must have print-to-file capability and either an RS-232 or USB port.

imageSPECTRUM FITS EASILY INTO NEARLY ANY BUSINESS ENVIRONMENT

imageSPECTRUM can be easily configured to support virtually any practice network, small or large. Designed with your growing practice in mind, this system is readily scalable. This means that imageSPECTRUM can support not only the needs of your current practice, but also easily expand as your practice grows or your needs change.

▼ A SINGLE-SITE NETWORK WITH MULTIPLE EXAM ROOMS ▼



▲ A MULTISITE NETWORK WITH MULTIPLE EXAM ROOMS ▲

CR-2 PLUS AF

DIGITAL NON-MYDRIATIC RETINA CAMERA

Specifications

General

Type: Digital Retinal Camera, Non-Mydriatic

Type of Photography

Color, Digital Red-free, Digital Cobalt, Fundus AutoFluorescence (FAF)

Angle of View: 45° (35° SP Mode)

Magnification: 2x Digital

Minimal Pupil Size: 4.0 mm (3.3 mm SP mode)

Focus Adjustment Type: Split-Line Adjustment

Patient Diopter Compensation Range

Without Compensation Lens: -10 D to +15 D

With "-" Compensation Lens: -31 D to -7 D

With "+" Compensation Lens: +11 D to +33 D

Light Source

Observation: LED

Photography: Xenon Tube

Canthus Mark: 420 mm From Base

Internal Eye Fixation: LED Dot Matrix

External Eye Fixation: White LED (Sold Separately)

Working Distance: 35 mm

Working Distance Adjustment

Anterior Observation: Double Image Match Method

Fundus Observation: Working Distance Dots

Sensor Resolution: 18.0 megapixels or more

Camera

Dedicated EOS Camera for CR-2 PLUS AF (Bundled)

Monitor

3.0-inch Color LCD Monitor

External Monitor (Optional)

Auto Function: Automatic Exposure

Mount Movement

Front and Back: 70 mm

Side to Side: 100 mm

Up and Down: 30 mm

Chin Rest Movement: 60 mm

Electrical and Environmental

PC Interface: USB 1.1, USB 2.0

Power Supply: AC 100-240 V, 50/60 Hz

Operating Environment

Temperature: 50° to 86° Fahrenheit (10° to 35° Celsius)

Humidity: 30% to 90% RH (No Condensation)

Atmospheric Pressure: 700 to 1060 hPa

Physical Characteristics

Dimensions (H x W x D)

20.2" x 12" x 19.7" (513 mm x 305 mm x 500 mm)

Weight: 43.9 lb. (19.9 kg)



POST SALE
SERVICE AND
SUPPORT

MAINTAINING YOUR INVESTMENT IN EXCELLENCE.

The CR-2 PLUS AF Digital Non-Mydriatic Retinal Camera is backed by Canon, a global microprocessor-based company with 75 years of optical experience. Its superb customer service and support organization is ready to answer your needs 24/7/365.

This common sense approach to service allows you to purchase a service plan that suits your specific needs—and your budget. The Canon service program may help you avoid costly instrument downtime while also helping you with the accessibility of your vital patient images and information.

To schedule a demo or for additional information,
call 1-800-970-7227 or visit our Web site.

USA.CANON.COM/EYE-CARE



Canon and EOS are registered trademarks of Canon Inc. in the United States and may also be registered trademarks or trademarks in other countries. DICOM is a registered trademark of the National Electrical Manufacturers Association for its standards publications relating to digital communications of medical information. All other referenced product names and marks are trademarks of their respective owners. Specifications subject to change without notice. Not responsible for typographical errors.

©2016 Canon U.S.A., Inc. All rights reserved.

EB-035, Rev. B
0416R-CR2*AF-PDF-IH