

iCare DRsplus



**Innovating a higher standard
in retinal imaging**

For better perception **icare**



iCare DRSplus Focus. Quality. Comfort.

DRSplus **confocal fundus imaging system** uses white LED illumination to produce TrueColor and detail-rich images, setting a new effective and efficient standard of **retinal imaging**.



TrueColor Confocal Technology, with white LED, promotes **detailed 45° retinal images** and allows to **scan through cataract**.



The confocal technology permits imaging through **pupils as small as 2.5 mm**, without need of dilation, ensuring a comfortable patient experience.



Fast Fully Automated operation requires minimal staff training to acquire the highest quality images, speeding up the examination time.



iCare DRSplus provides different imaging modalities

TrueColor, Red-free, Blue and Red channels, External Eye, Stereo view of the ONH and Mosaic.



Red-free



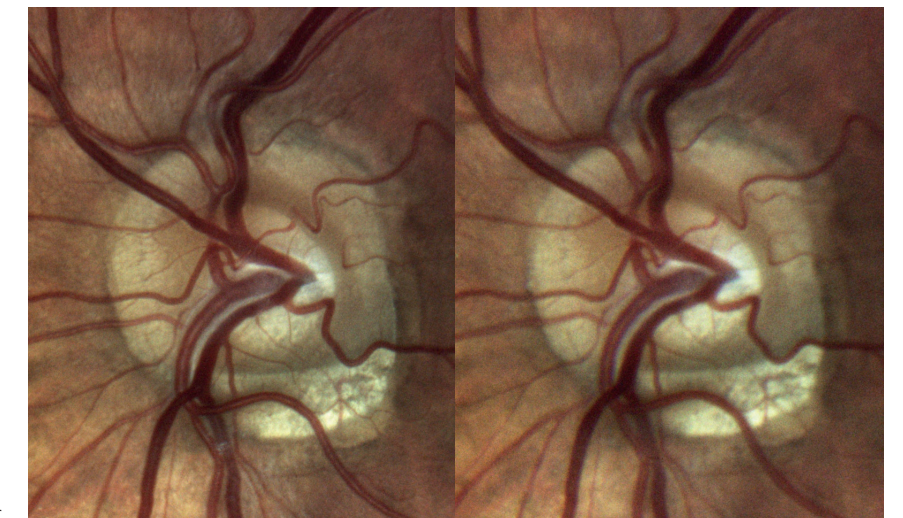
Blue



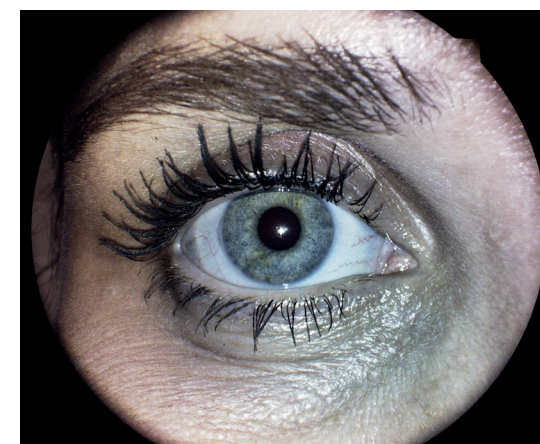
Red

Stereo Viewer Technology

DRSplus Stereo Viewer Technology (optional) automatically captures two separate photos of the nasal field, at different angles and different focal planes (bifocal), creating improved 3D perception of the disc.



Stereo pair



External Eye Photography

External Eye imaging allows for documentation of eye surface and cornea conditions.

External Eye

The Mosaic function allows a **panoramic view of the retina, up to 80°**

By using a special stitching algorithm, DRSplus automatically combines different fields without user intervention.



iCare DRSplus **Remote Viewer**

The DRSplus Remote Viewer (optional) is a browser-based software license that allows for reviewing from any network computer on the same local area network (LAN), with user login and password protection.



iCare DRSplus **Remote Exam**

The DRSplus Remote Exam (optional) allows the users to control the device remotely, extending the distance between the operator and patient. Once the device is connected to the LAN of the medical office, the remote acquisition can be executed from any laptop connected to the same LAN, at a proper safe distance.



Provide your patient with a **comfortable exam experience**

DRSplus is designed to optimize patient comfort during the exam, allowing for the improvement of workflow and clinic efficiency.



Technical specifications

Fundus Imaging System Features

Field of View	Single image (W x H): 45° x 40° Mosaic up to 9 fields (W x H): 83° x 78°
Light Sources	White LED: 440-650 nm Infrared LED: 825-870 nm
Imaging Modalities	TrueColor, Red-Free*, Blue*, Red*, External Eye, Stereo**, Mosaic**
Autofocus Adjustment Range	-15D to +15 D
Automatic Operations	Auto-alignment, Auto-focus, Auto-exposure, Auto-capture, Auto-montage
Minimum Pupil Size	Non-myd 2.5 mm
Working Distance	25 mm
Image Size	10 Megapixels
Resolution	77 pixel/degree
Fixation Targets	Internal/External**
Dynamic Programmable Internal Fixation Target	Central, Nasal, Temporal, Central-Nasal, Superior, Inferior, Superior-Temporal, Superior-Nasal, Inferior-Temporal, Inferior-Nasal

Computer

Display	Integrated 10.1" (1280 x 800) Color, Capacitive, Multi-touch
Hard Drive	SSD ≥ 480 GB
Interfaces	USB port 2.0 x 3, Gigabit Ethernet Port x 1
Export / Import	jpeg, pdf, DICOM**, Web API**
Remote Viewer**	Up to a maximum of 5 remote stations

Dimensions/Power supply

Size (W x H x D)	300 mm (11.8") x 450 mm (17.7") x 650 mm (25.6")
Weight	11 Kg (24 lbs)
Rated Voltage	100-240 VAC
Frequency	50-60Hz
Power Consumption	60W
Electrical Class	IEC 60601-1 Class I

*Digital filters
**Optional

iCare. For better perception.

iCare is a trusted partner in ophthalmic diagnostics, offering physicians fast, easy-to-use, and reliable tools for diagnosis of glaucoma, diabetic retinopathy, and macular degeneration (AMD). Our product assortment includes automated TrueColor imaging devices, perimeters and handheld rebound tonometers.

We believe that ophthalmic care must be accessible, effortless, and reliable, and we aim at establishing the next level of eye care.

REV04 - 2020-09

The contents of this document may differ from the current status of approval of the product or service offering in your country. It is intended for Eye Care Professionals users only. Please contact our regional distributors for more information. Specifications are subject to change without notice for improvement, as a result of ongoing technical developments.



Centervue SpA

Via San Marco 9H
35129 Padova - Italy
Ph: +39 049 501 8399
Fax: +39 049 501 8398
info@icare-world.com

www.icare-world.com

icare

For better perception

Centervue SpA is the Legal Manufacturer of DRSpplus, COMPASS, EIDON, EIDON AF, EIDON FA and MAIA. iCare is a registered trademark of ICARE FINLAND OY. CENTERVUE S.P.A., ICARE FINLAND OY and ICARE USA INC. are parts of REVENIO GROUP and represent the brand iCare.